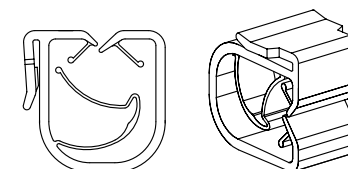
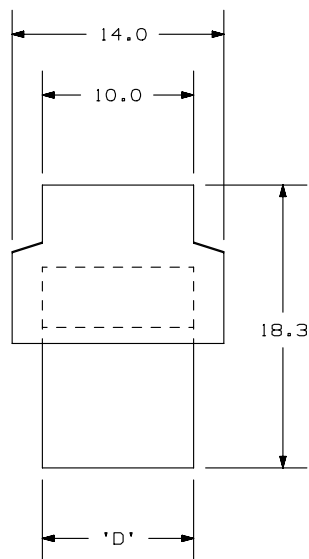
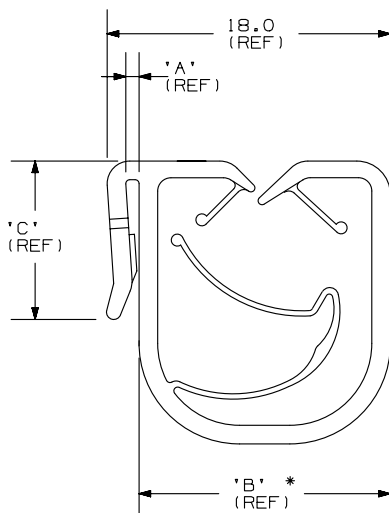


THIS COPY IS PROVIDED ON A RESTRICTED BASIS AND IS NOT TO BE USED IN ANY WAY DETRIMENTAL TO THE INTERESTS OF PANDUIT CORPORATION.

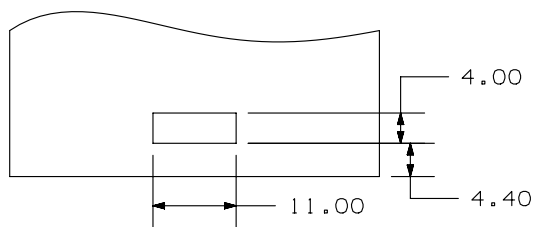
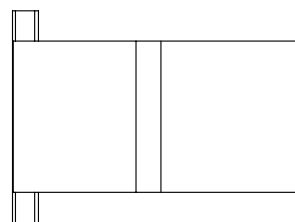
| PANDUIT PART NO. | BUNDLE DIA MIN - MAX. | DIMENSIONS | | | | MATERIAL | COLOR | WEIGHT grams 100 pcs |
|------------------|-----------------------|------------|-----|------|------|-----------|-------|-------------------------|
| | | 'A' | 'B' | 'C' | 'D' | | | |
| HCME06A12-...20 | 6 - 12 | 1.2 | 15 | 12.0 | 10.0 | NYLON 6/6 | BLACK | 150 |
| HCME06A12-...130 | 6 - 12 | 1.2 | 15 | 12.0 | 10.0 | ACETAL | | |



SCALE: FULL

NOTES:

- SEE www.panduit.com FOR CURRENT PART NUMBER SUFFIX DESIGNATION FOR PACKAGE SIZE AND PART COLOR.
- (*) DIMENSIONAL VARIANCE IS POSSIBLE DUE TO MOLDING PROCESS RELATED SINK MARKS.
- APPLICATION SPECIFICATION:
 PUNCHED RECTANGULAR HOLE: 4.0 x 11.0 mm
 PANEL THICKNESS: 0.6 - 1.2 mm



Application Specification Detail View (See note 3)

| | | | |
|---|--------|---------------------------------|-------------|
| CAD FILENAME/LAYERS | | 10B0151X_DC/00 - GB1932BF_REV08 | |
| PANDUIT CORP. | | TINLEY PARK, ILLINOIS | |
| HARNESS CLIP FOR EDGE MOUNT | | | |
| Unless otherwise specified, all dimensions are metric tolerance: ±0.5mm | | | |
| DRAWN BY | JAD | MAT'L: | SCALE 2X |
| DATE | 5-7-98 | SEE TABLE | DRAWING NO. |
| CHK'D | | | GB1932BF |
| | | | DWG SIZE A |

| REV | DATE | BY | CHK | DESCRIPTION | ECN | R | CUST | SUP |
|-----|---------|-----|------|--|----------|----|------|-----|
| 08 | 3/20/13 | BWG | JADE | REVISED DIMENSION "D" WAS 9.7 - 9.7. CADFILE WAS G01932BF_PB_HCME06A12_07. REVISED NOTE 1. | GB1932BF | 08 | | PBC |